



Investment in power plants through energy cooperatives



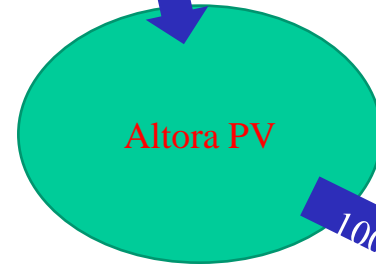
Manspach 30 kWc



Mécasoft 31 kWc



44 cooperators
86 000 € as capital



Zusamme Solar
4 x 100 kWc



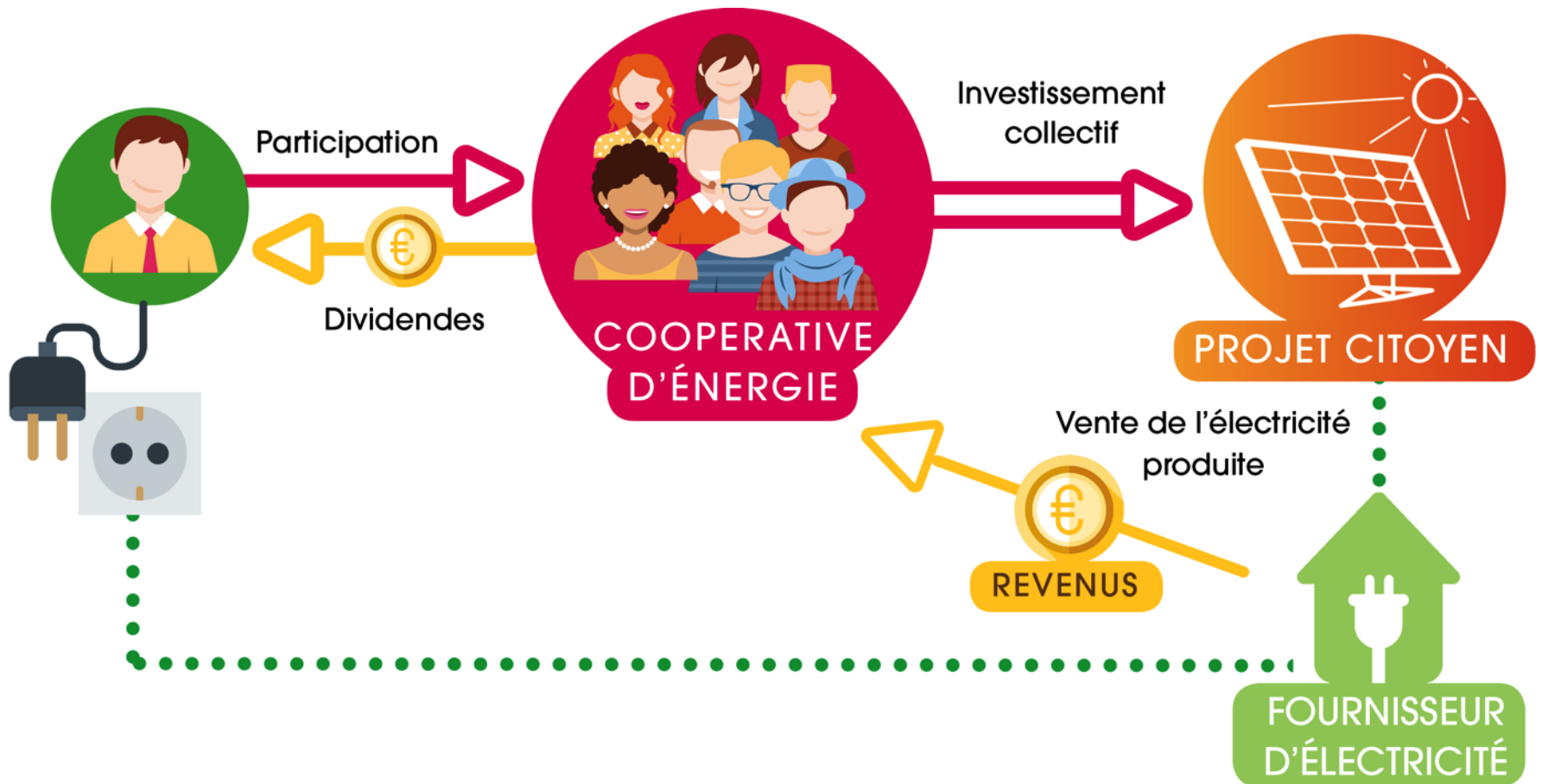
Gommersdorf 9 kWc



Ballersdorf 7 kWc



An energy cooperative means gathering to produce our own energy !



People's projects or participative projects ?

Participative projects :

- Share capital opened to citizens (part of the shares or part of the debt)
- Governance by the main investor
- Citizens consultation
- Local adhesion facilitation

People's projects :

- Share capital mainly owned by citizens (inhabitants, local governments)
- Governance by local actors
- Co- construction
- Large cooperations
- Local adhesion facilitation
- Educational actions

People's power plants : ressources & money remain on the territory

Les capitaux initiaux sont engagés par les citoyens et les collectivités locales.

INVESTISSEMENTS

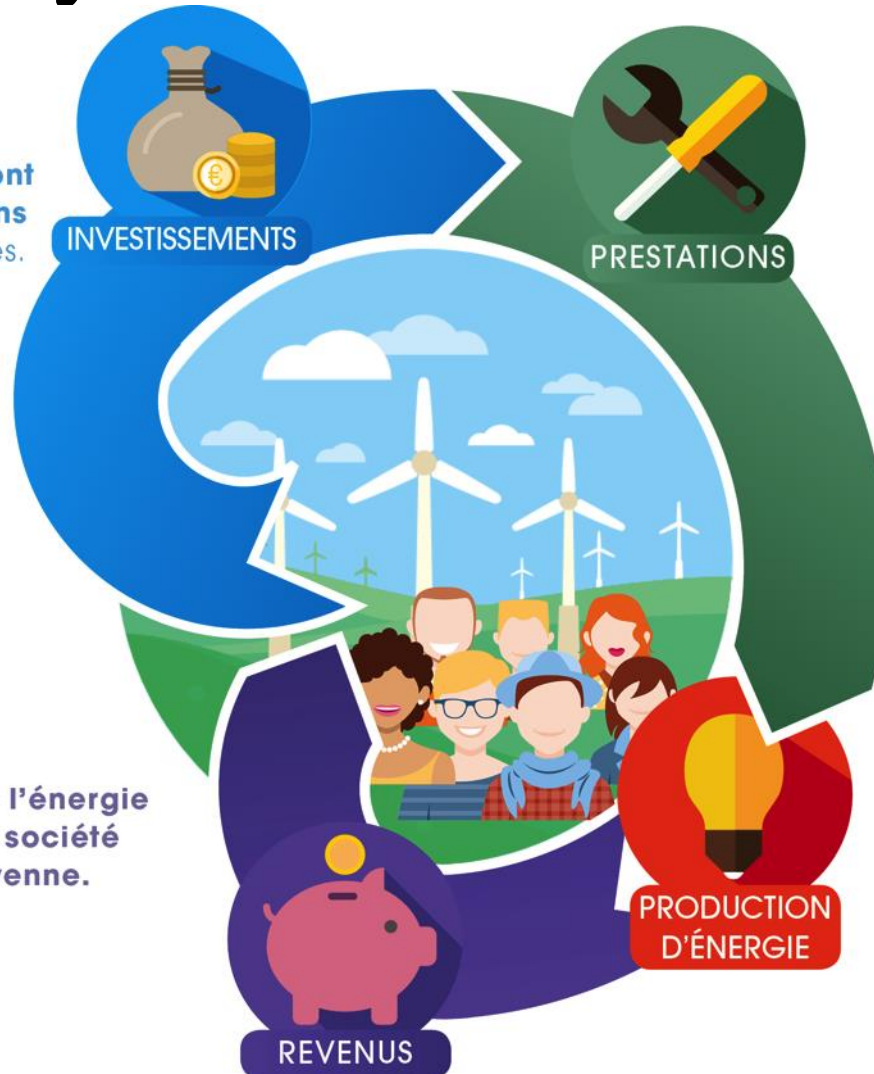
PRESTATIONS

Sollicitation d'acteurs du territoire pour les études, le matériel, l'installation et la maintenance.

La vente de l'énergie revient à la société locale citoyenne.

REVENUS

PRODUCTION D'ÉNERGIE



Movement Energie Partagée fills

2 missions : advices to local
gatherings & financing

