

Repowering : French Framework & RES approach

OFATE

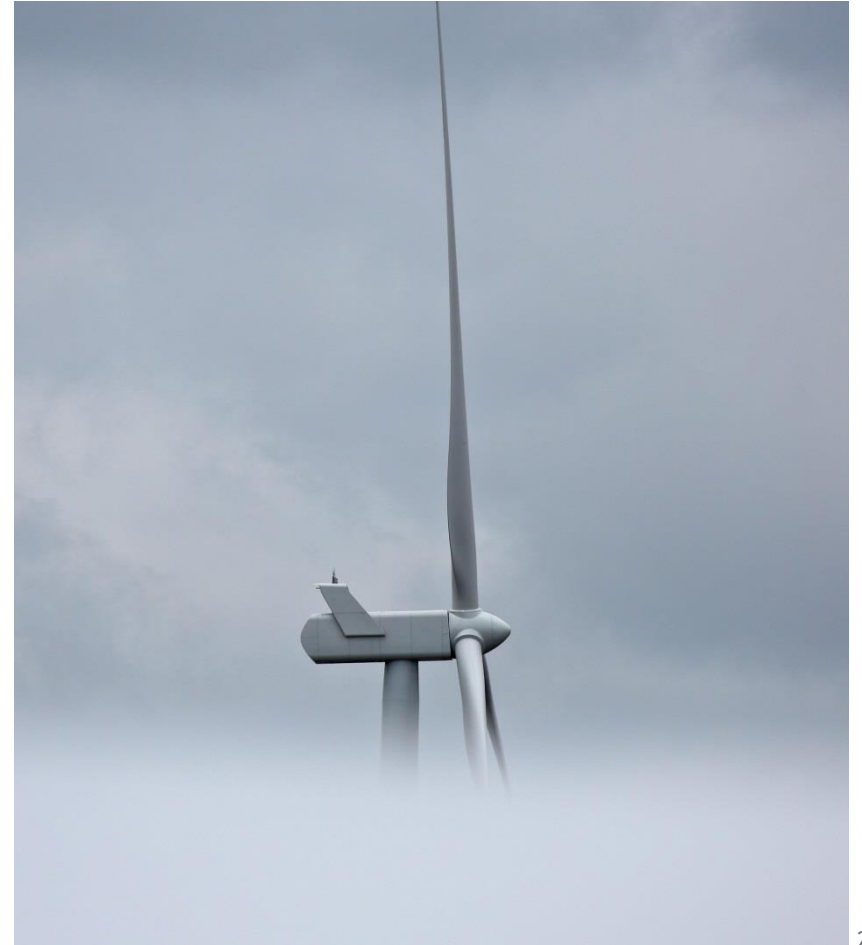
Matthieu Tusch

Wind Projects Manager - France



Agenda - Repowering Opportunity

1. RES
2. French repowering context
3. Economic levers
4. RES' approach
5. Q&A



An active player on the renewable energy production market :

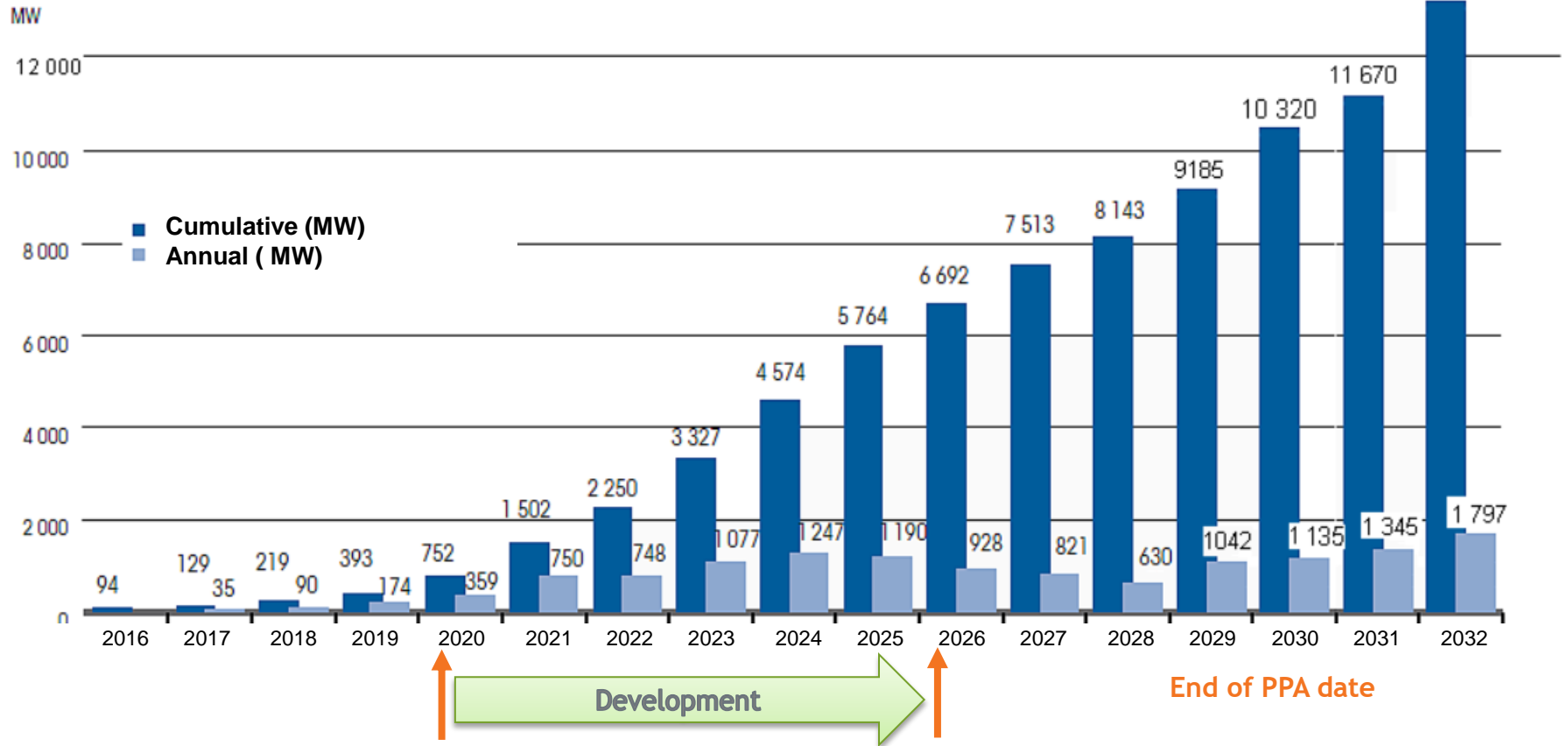
- 240 employees in 10 agencies
- More than 1GW of Renewable Energy Projects developed
- Around 800MW of Renewable Energy Technologies in operation
- 3rd biggest independent wind energy technology operator (based on MW operated)

Our repowering activity comprises :

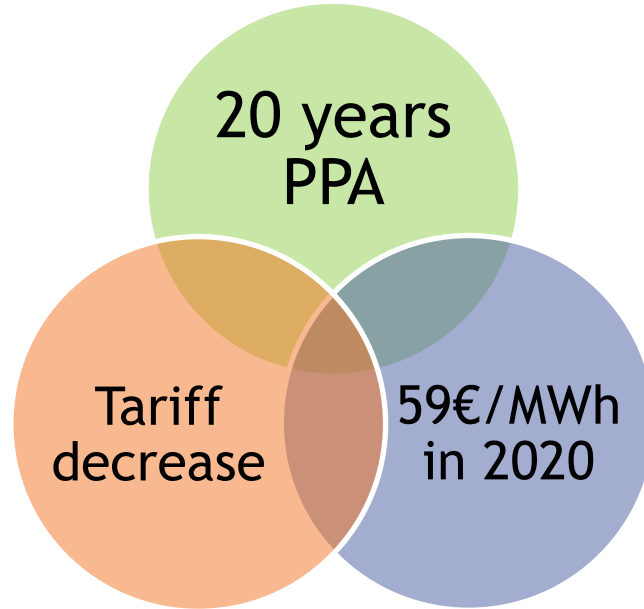
- **One ready to build project** (Souleilla-Corbières) authorised in May 2018
- **5 permit applications** in 2020 for 80 MW
- **4 permit awards** planned for 2021
- **Signed repowering contracts** with 3 asset owners
- **An average 111% increase in production** : doubling of the production capacity
- **20 repowering projects** under investigation or development, owned by **10 customers** for 400MW



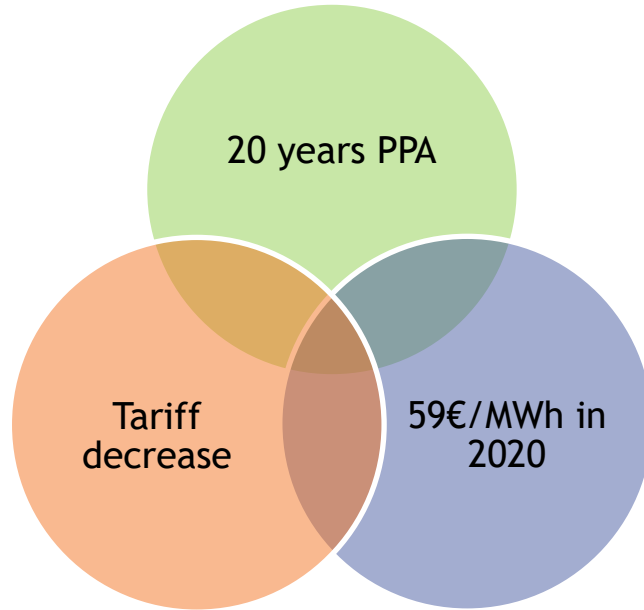
French repowering market context



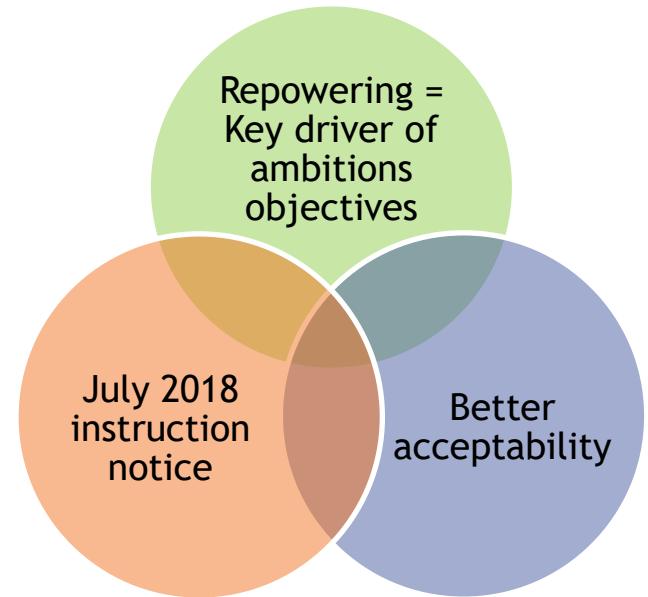
Economic context



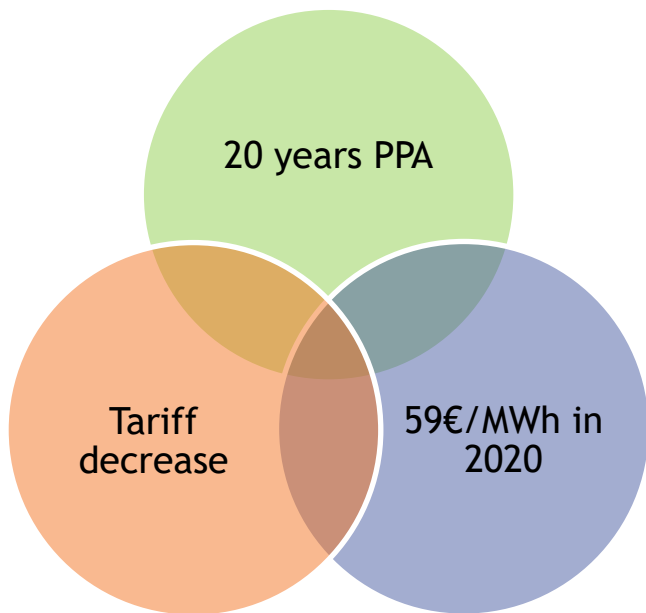
Economic context



Administrative context



Economic context



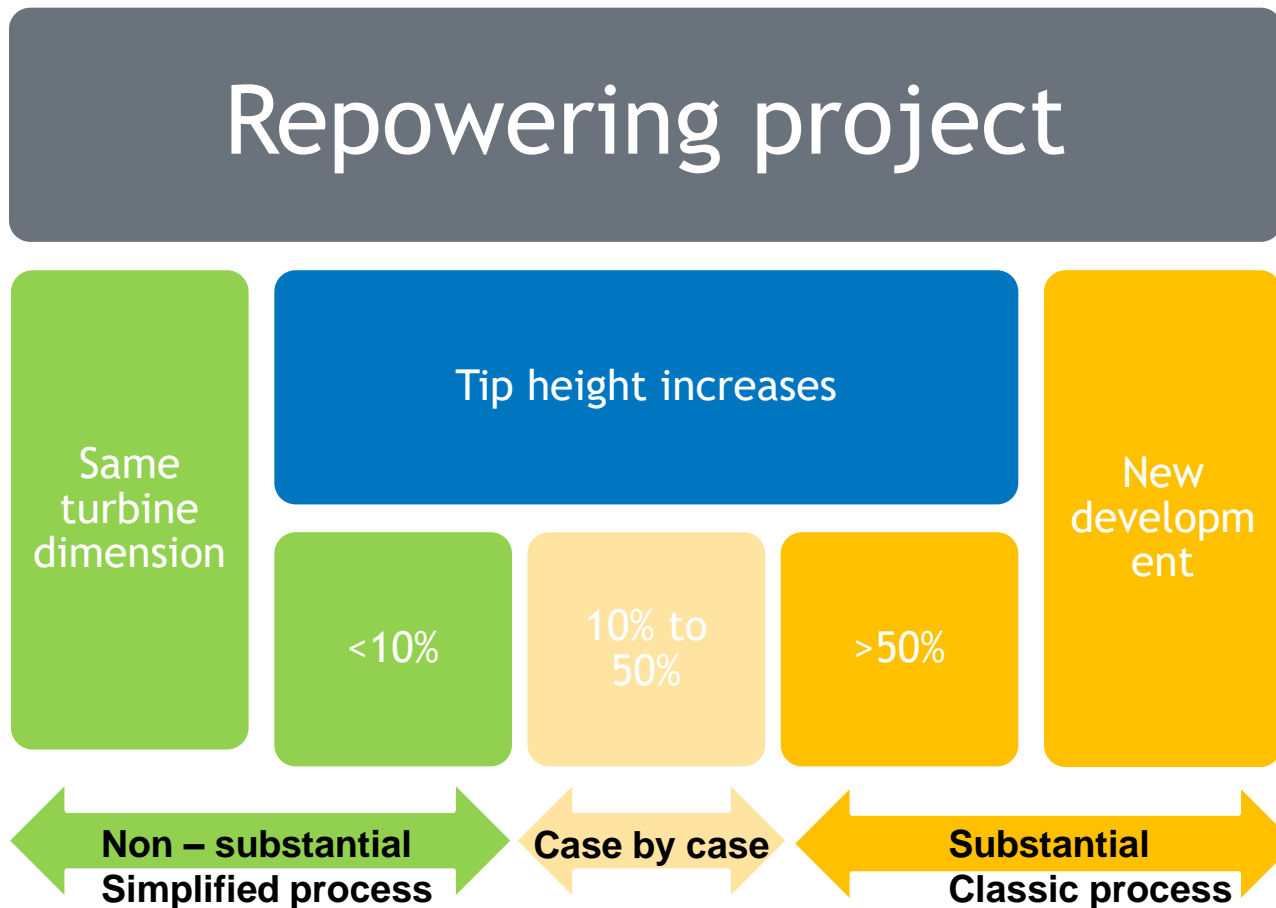
Authorization is needed to apply for the tariff

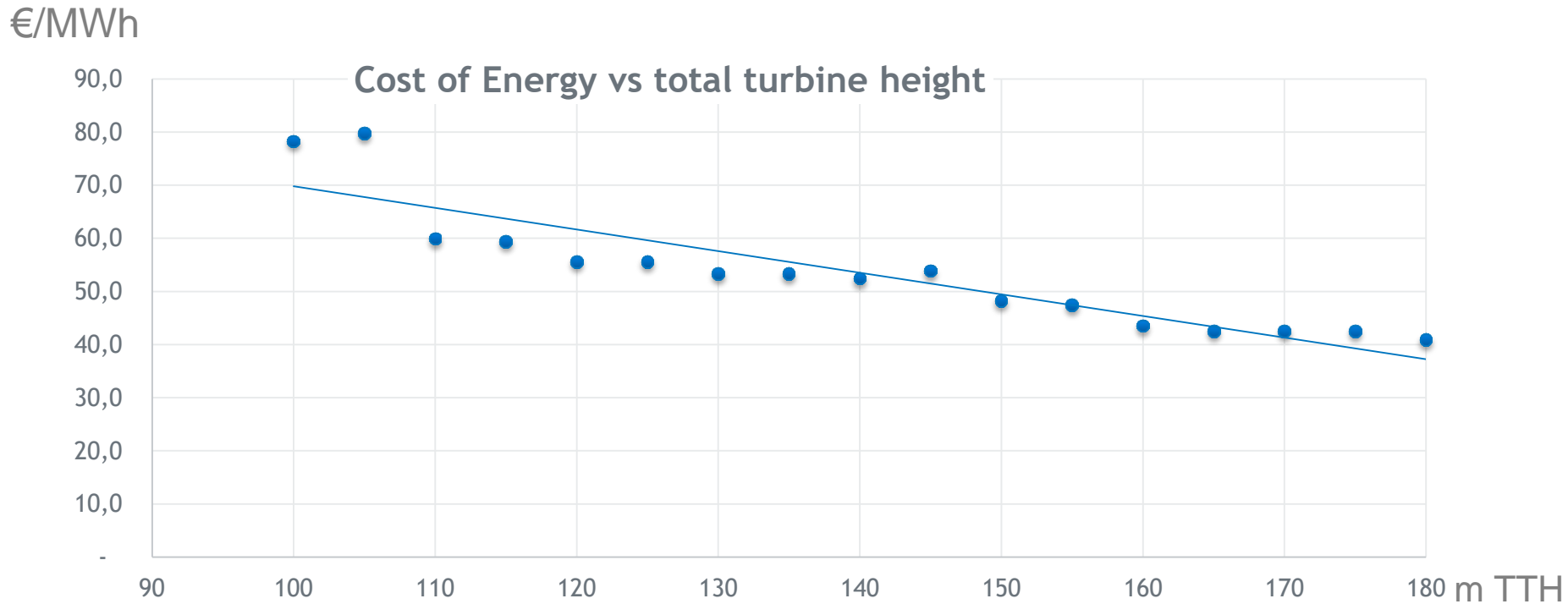
Administrative context



The sooner you obtain your planning authorization, the better CfD price you can secure

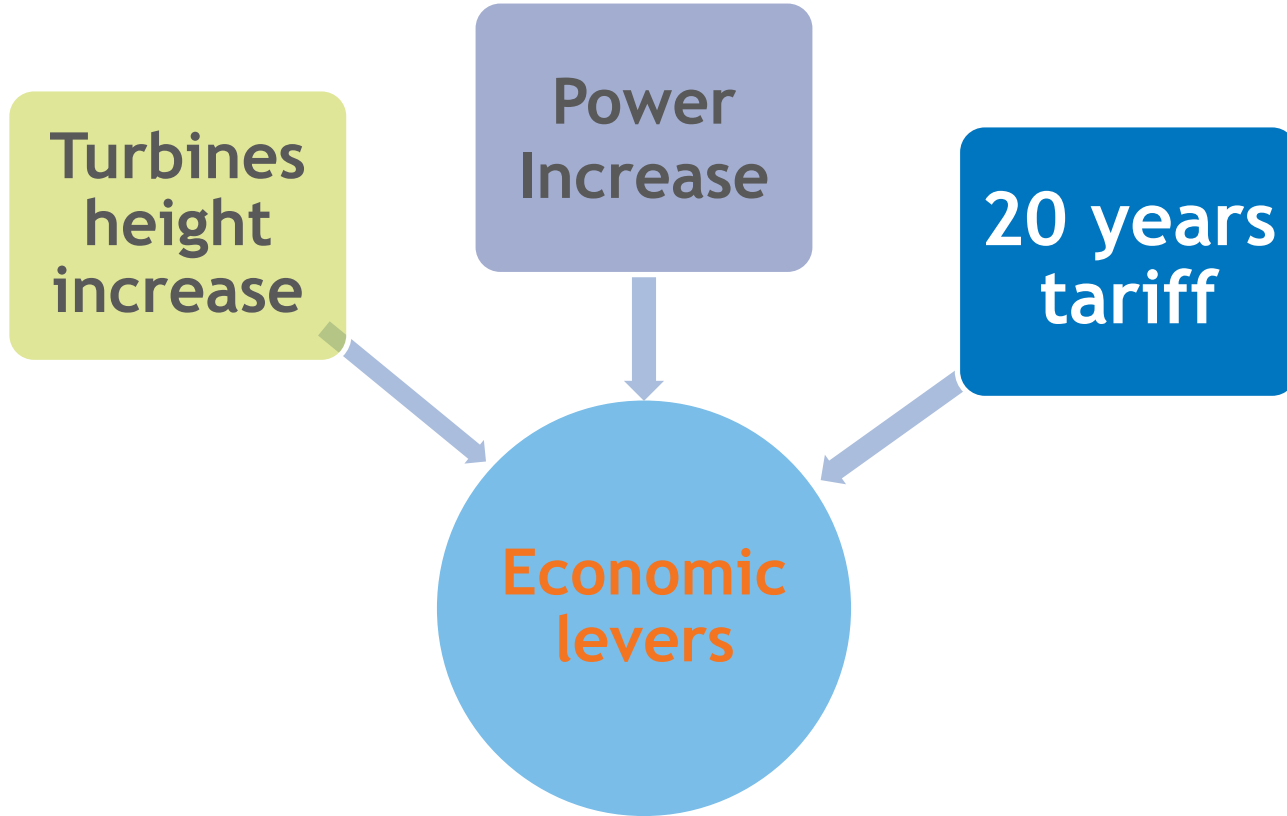
Legal framework has been defined in the instruction notice of July 2018:





+10m height = -5€/MWh

Repowering: what are the economic levers ?



Your wind asset has value. **The site on which it is installed has even more!**

Site owner



Asset



Land Lease



Authorizations



Development
Capability



DEV costs &
associated risks



Construction
Capability

Repowering project

RES seeks to create **partnerships with asset owners** based on our complementarity

Questions ?

www.res-group.com

Matthieu Tusch
Wind Farm Manager - France
+33 432 767 193
Matthieu.tusch@res-group.com



www.res-group.com

Matthieu Tusch
Wind Farm Manager - France
+33 432 767 193
Matthieu.tusch@res-group.com

