



Office franco-allemand pour la transition énergétique
Deutsch-französisches Büro für die Energiewende

BePOSITIVE
8>10 MARS 2017 - EUREXPO LYON

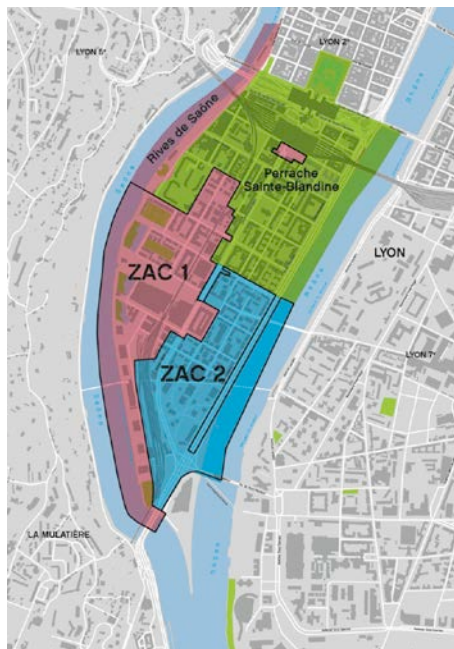


Lyon-Confluence: experimentation of a smart neighbourhood

Etienne Vignali (SPL Lyon Confluence)



The Lyon-Confluence urban project



- **150 hectares** (70 renewed)
- **1,000,000 m² net floor area** to be built
- **20,000 inhabitants** (7,000 in 2000)
- **25,000 jobs** (7,000 in 2000)

Existing neighbourhood

Phase 1: 2003-2018

Phase 2: 2012-2030



Office franco-allemand pour la transition énergétique
Deutsch-französisches Büro für die Energiewende

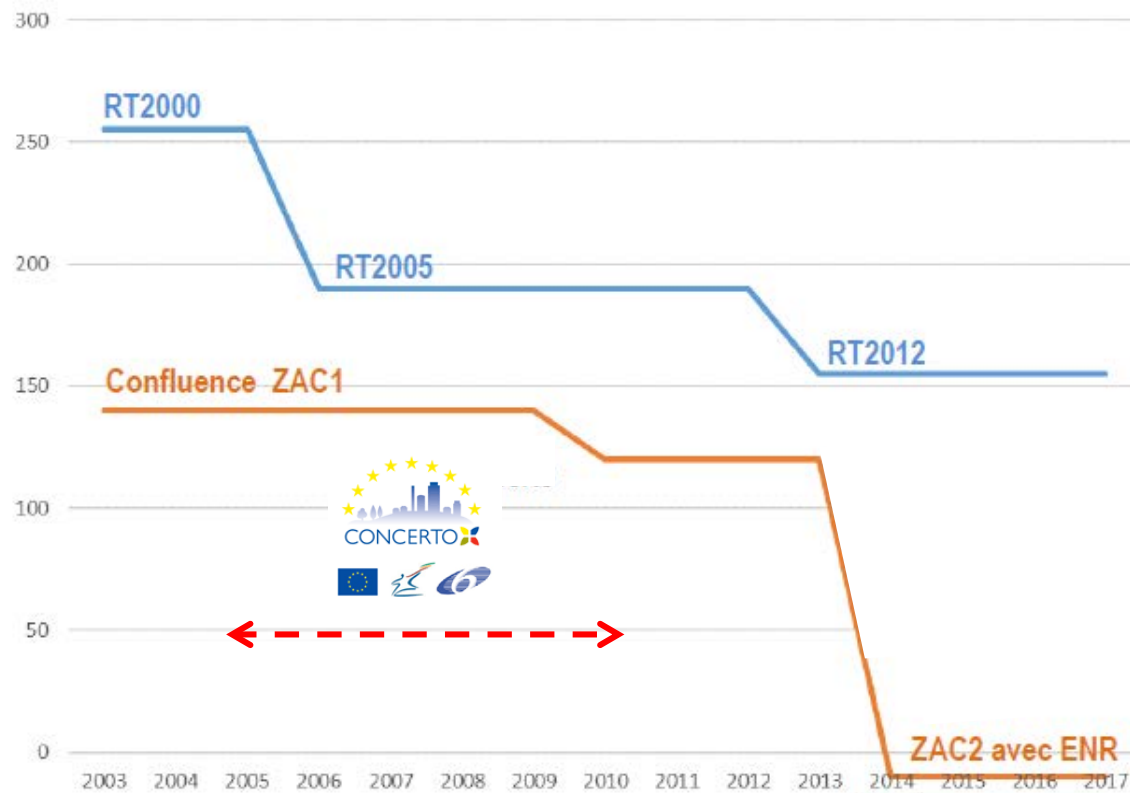
BePOSITIVE

8>10 MARS 2017 - EUREXPO LYON

Lyon-Confluence: evolution of the energy consumption of residential buildings (KW primary energy/m²/year)

French thermic regulation

Energy consumption of Lyon-Confluence



NEXT buildings
LYON
SMART
COMMUNITY

HORIZON 2020
LE PROGRAMME DE RECHERCHE ET D'INNOVATION DE L'UNION EUROPÉENNE
Smarter Together

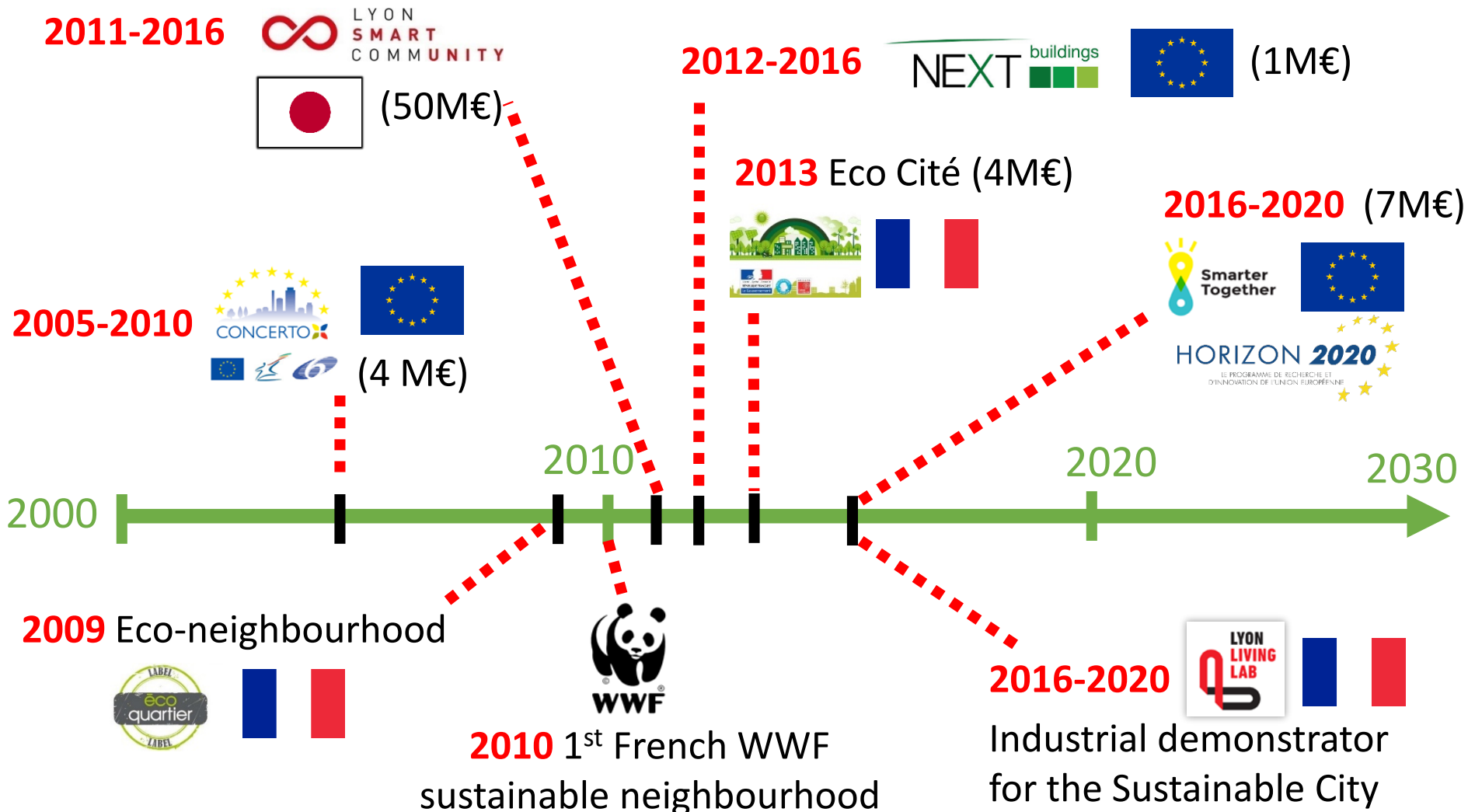


Office franco-allemand pour la transition énergétique
Deutsch-französisches Büro für die Energiewende

BePOSITIVE

8>10 MARS 2017 - EUREXPO LYON

Lyon-Confluence: a sustainable action plan

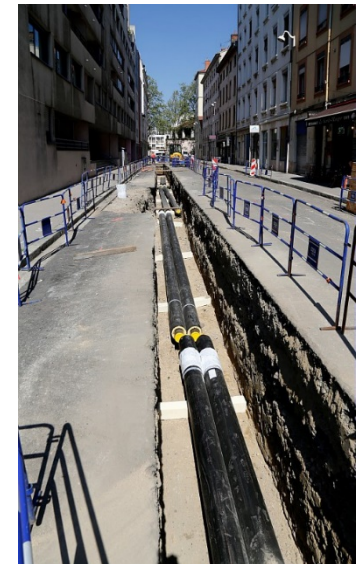




Office franco-allemand pour la transition énergétique
Deutsch-französisches Büro für die Energiewende

BePOSITIVE
8>10 MARS 2017 - EUREXPO LYON

Energy production: heating & photovoltaic



GRAND LYON
la métropole

Lyon Confluence

.fr



Office franco-allemand pour la transition énergétique
Deutsch-französisches Büro für die Energiewende

BePOSITIVE

8>10 MARS 2017 - EUREXPO LYON

Reduction of the energy consumption of the new buildings





Office franco-allemand pour la transition énergétique
Deutsch-französisches Büro für die Energiewende

BePOSITIVE
8>10 MARS 2017 - EUREXPO LYON

Refurbishment of buildings



Cité Perrache
(14,000 m²: 250 housings)



Cité Mignot
(9,000 m²: 160 housings)



Hall Girard / French Tech
(5,000m²: office spaces)



GRAND LYON
la métropole

Lyon Confluence

.fr



Office franco-allemand pour la transition énergétique
Deutsch-französisches Büro für die Energiewende

BePOSITIVE
8>10 MARS 2017 - EUREXPO LYON

Shared electric mobility



Navly (autonomous electric shuttle)

Bluely + CNR (electric car charging stations)

Public transport



Management of District Energy Data



Application/Service "viewer"

Performance of
new buildings

Performance of
eco-refurbished
buildings

Lyon Metropolis Data Platform



Use of electric
vehicles

Eco-refurbished
buildings
(individual
consumptions)

Energy consumption &
production for Lyon-
Confluence area (Zero
carbon Action Plan)



Office franco-allemand pour la transition énergétique
Deutsch-französisches Büro für die Energiewende

BePOSITIVE
8>10 MARS 2017 - EUREXPO LYON



Lyon-Confluence in 2030

Thanks for your attention!

Etienne Vignali (SPL Lyon Confluence)
evignali@lyon-confluence.fr